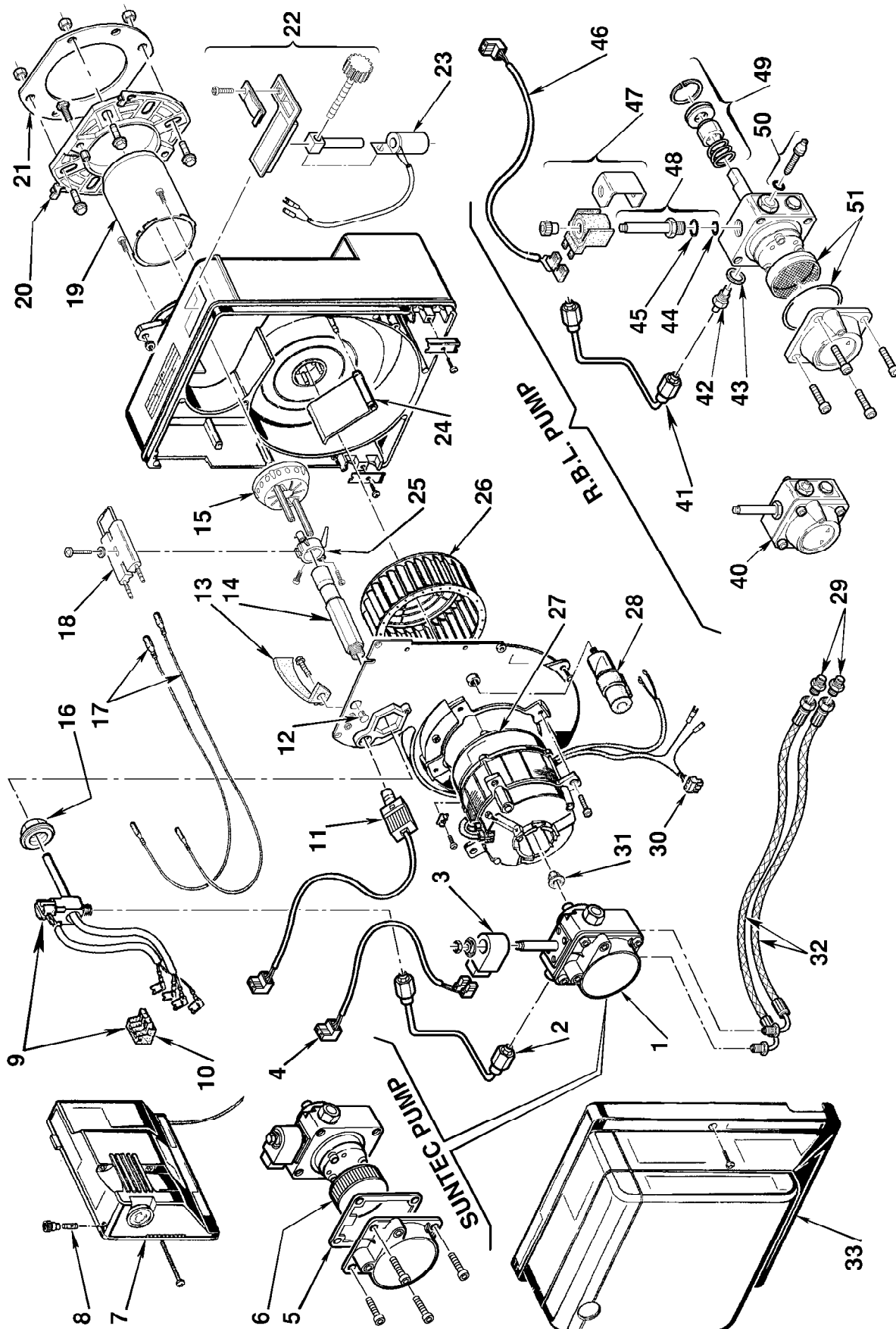


Bruciatori di gasolio • Oil burners • Brûleurs fioul domestiques • Öl-Gebläsebrenner
Quemadores de gasóleo

Gulliver RG0.R
Gulliver RG0.1R

COD. 3736551
COD. 3736751

TIPO / TYPE / TYP 367 T1
TIPO / TYPE / TYP 368 T1



N.	COD.	DESCRIZIONE	DESCRIPTION	BESCHREIBUNG	DENOMINACIÓN	MATRICOLA BRUCIATORE BURNER SERIAL NUMBER MATRICULE BRULEUR BRENNER KENN-NUMMER MATICULA QUEMADOR
1	3002495	POMPA SUNTEC	SUNTEC PUMP	SUNTEC PUMPE	BOMBA SUNTEC	≥ 01132XXXXXX
2	3002497	TUBO	TUBE	DRUCKROHR	TUBO	≥ 01132XXXXXX
3	3002451	BOBINA	COIL	MAGNETVENTIL - SPULE	BOBINA	≥ 01132XXXXXX
4	3002496	COLLEGAMENTO	LEAD	ANSCHLUßKABEL MAGNETSPULE	CABLES ELECTROVÁLVULA	≥ 01132XXXXXX
5	3003081	GUARNIZIONE	SEAL	DICHTUNG	JUNTA	≥ 01132XXXXXX
6	3003082	FILTRO	FILTER	FILTEREINSATZ ÖLPUMPE	FILTRO	≥ 01132XXXXXX
7	3001168	APPARECCHIATURA 550SMD	CONTROL BOX 550SMD	STEUERGERÄT 550SMD	CAJA DE CONTROL 550SMD	
8	3007396	FUSIBILE	FUSE	FEINSICHERUNG	FUSIBLE	
9	3008095	GRUPPO RISCALDATORE	HEATER ASSEMBLY	VORWÄRMERSATZ	CONJUNTO CALENTADOR	
10	3007456	PRESA	SOCKET	STECKDOSE	CONECTOR	
11	3007492	FOTORESISTENZA	P.E. CELL	FOTOWIDERSTAND	FOTORESISTENCIA	
12	3007458	VETRINO	VIEWING PORT	VERCHLUßSTOPFEN	MIRILLA	
13	3008946	CONVOGLIATORE	SUCTION DUCT	LÜFTLEITBLECH	GUIA	
14	3008940	PORTAUGELLO	NOZZLE HOLDER	DÜSENSTOCK	PORTABOQUILLA	
15	3008948	TURBOLATORE	DIFFUSER DISC	STAUSCHEIBEN	DISCO ESTABILIZADOR	
15	3008949	TURBOLATORE	DIFFUSER DISC	STAUSCHEIBEN	DISCO ESTABILIZADOR	
16	3008942	BOCCOLA	BUSH	BÜCHSE	CASQUILLO	
17	3007465	COLLEGAMENTO A.T.	HIGH VOLTAGE LEAD	KABEL ZÜNDELEKTRODEN	CABLES ELECTRODOS	
18	3007617	GRUPPO ELETTRODI	ELECTRODE ASSEMBLY	ELEKTRODENBLOCK	CONJUNTO ELECTRODOS	
19	3008947	BOCCAGLIO	BLAST TUBE	FLAMMROHR	TUBO LLAMA	
20	3008636	FLANGIA	FLANGE	KESELFLANSCH	BRIDA	
21	3005787	SCHERMO	GASKET	KESELFLANSCH-DICHTUNG	JUNTA AISLANTE	
22	3008953	REGOLATORE SERRANDA	AIR DAMPER REGULATOR	LUFTRÉGULIERUNG	CONJUNTO REGUL. REGISTRO	
23	3008951	BOBINA	COIL	BOBINE	BOBINA	
24	3008945	SERRANDA ARIA	AIR DAMPER	LUFTKLAPPE	REGISTRO DEL AIRE	
25	3007466	SUPPORTO	SUPPORT	PORTE ACCROCHEUR	SOPORTE	
26	3008952	GIRANTE	FAN	TURBINE	TURBINA	
27	3008938	MOTORE	MOTOR	MOTEUR	MOTOR	
28	3007479	CONDENSATORE 4 µF	CAPACITOR 4 µF	CONDENSATEUR 4 µF	CONDENSADOR 4 µF	
29	3009068	RACCORDO	CONNECTOR	ANSCHLUßSNIPPEL	RACORD	
30	3007454	PRESA MOTORE	MOTOR SOCKET	PRISE MOTEUR	CONECTOR MOTOR	
31	3000443	GIUNTO	JOINT	ACCOUPLLEMENT	ACOPLAMIENTO	
32	3005720	TUBO FLESSIBILE	FLEXIBLE OIL LINE	ÖLSCHLAUCH	TUBO FLEXIBLE	
33	3008939	COFANO	COVER	BRENNERHAUBE	ENVOLVENTE	
40	3007771	POMPA R.B.L.	R.B.L. PUMP	R.B.L. PUMPE	BOMBA R.B.L.	≤ 01122XXXXXX
41	3008943	TUBO	TUBE	DRUCKROHR	TUBO	≤ 01122XXXXXX
42	3007268	RACCORDO	CONNECTOR	ANSCHLUßSNIPPEL PUMPE	RACORD	≤ 01122XXXXXX
43	3007087	GUARNIZIONE	SEAL	O-RING-DICHTUNG	JUNTA	≤ 01122XXXXXX
44	3007156	ANELLO OR	O-RING	O-RING-DICHTUNG	JUNTA TÓRICA	≤ 01122XXXXXX
45	3007173	ANELLO OR	O-RING	O-RING-DICHTUNG	JUNTA TÓRICA	≤ 01122XXXXXX
46	3007772	COLLEGAMENTO	LEAD	ANSCHLUßKABEL MAGNETSPULE	CABLES ELECTROVÁLVULA	≤ 01122XXXXXX
47	3008648	BOBINA	COIL	MAGNETVENTIL - SPULE	BOBINA	≤ 01122XXXXXX
48	3007582	VALVOLA	NEEDLE VALVE	MAGNETVENTIL-KÖRPER	VÁLVULA	≤ 01122XXXXXX

